

Optimized Shape

LEADS TO ✦

Optimized

Blood Flow



Prismaccess

Leading the way



Prismaccess – Low Pressure and Increased Biocompatibility

The Prismaccess catheter offers increased performance making the blood purification safer and more efficient.

The new design of the catheter has the access lumen shape optimized to achieve good access pressure even at high blood flow rates.

The Surface Modifying Additive (SMA*) of PriSMAccess Protect creates a stable and smooth catheter surface, offering antibacterial and antithrombogenic protection.

Optimized Shape

- The kidney shaped design of the access lumen achieves the highest blood flow rate compared to other lumen designs.
- Tip design without side holes reduces the clotting risk and therefore lowers the risk for the patient.

Innovative design

- Advanced surface-volume ratio to improve blood flow conditions (compared to co-axial design).
- Favorable inner lumen design to prevent dead-end spaces (compared to DD-design).
- Catheter design and inner dilator facilitate catheter insertion with improved blood flow conditions (compared to dual round design).

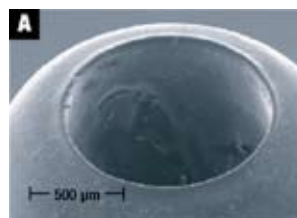
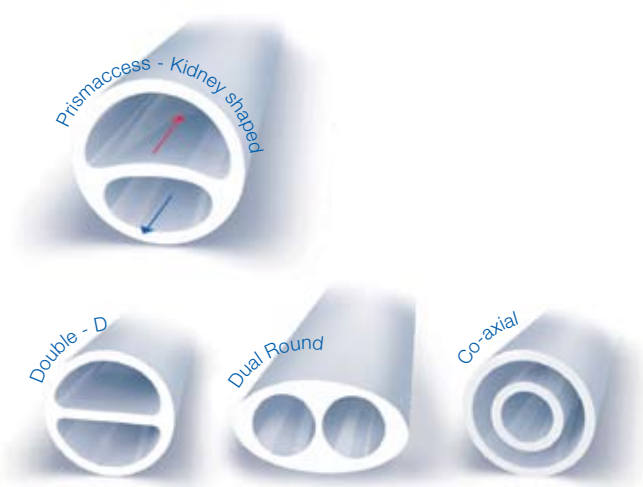
Improved Biocompatibility

The SMA technology of PriSMAccess Protect creates a stable smooth surface, which reduces interaction between cells, plasma proteins and the catheter. This enhanced surface quality reduces blood activation and therefore leads to a prolonged duration of catheter usage.

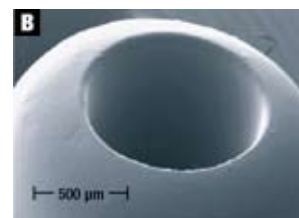
Reduced adherence of bacteria

By integrating the antibacterial Bi-Additive into the PriSMAccess Protect catheter surface coating the new technology offers the first anti thrombogenic, antibacterial catheter without the release of any pharmaceuticals, i.e. antibiotics, or other components like silver.

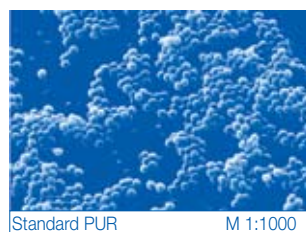
The inhibition of bacterial adherence and growth with PriSMAccess Protect shown with *Staphylococcus epidermidis* in vitro.



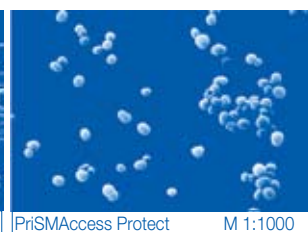
A: Catheter without SMA-treatment



B: PriSMAccess Protect catheter with surface treatment



Standard PUR M 1:1000



PriSMAccess Protect M 1:1000

Scanning electron microscopy of coated and uncoated material after 48-h incubation with *S. epidermidis* (at 37° C) illustrates reduced adherence and inhibition of bacterial growth through PriSMAccess Protect surface.

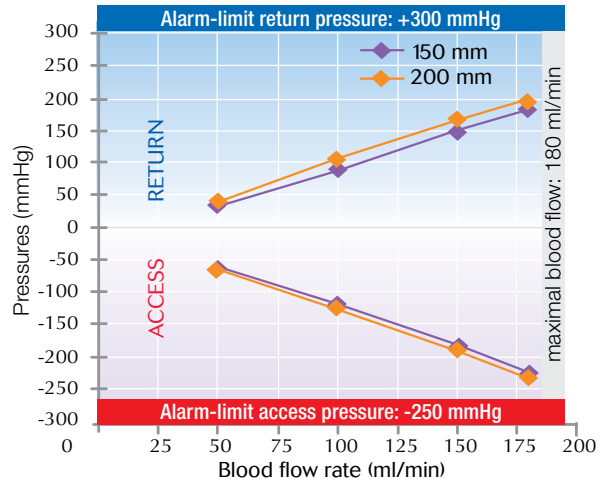
Performance of Prismaccess within the Prisma system

When using the Prisma system for CRRT (Continuous Renal Replacement Therapy), access and return pressures in the blood circuit can be very close to the limits creating repeated alarms and constraining blood flow rate. The choice of the catheter location and condition may be responsible for this situation.

The Prismaflex system offers you the possibility of low and high flow CRRT. The Prismaccess design supports your treatment from the access side – Prismaccess 13 for high flow and Prismaccess 11 for low flow.

Using the double lumen Prismaccess catheter with its unique “kidney shape” and no side holes will allow CRRT therapies to be operated at the right pressure level (figure 1).

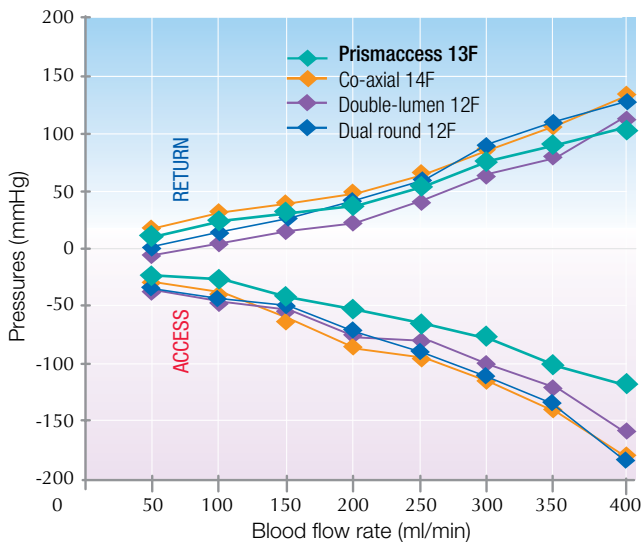
Prismaccess catheters offer low pressure conditions when used for CRRT with Prisma machine



Prismaccess Catheter 13F x 150 mm / 200 mm Method: in vitro testing Pump system: Prisma	Filter: Prisma M 100 set Fluid: bovine blood Hematocrit value: 32±2% Temperature: 37±2%
--	--

Fig. 1: in vitro investigation of Prismaccess catheters in use with Prisma machine

Optimized shape of Prismaccess catheter improves blood flow conditions



Product:
• Prismaccess 13Fx200 mm
• Co-axial catheter 14Fx200 mm
• Double-lumen catheter 12Fx200 mm
• Dual round 12Fx200 mm (oval)
Method: in vitro testing
Pump system: roller pump
Fluid: bovine blood
Protein: 60 ± 5 g/l
Hematocrit value: 32 ± 2%
Temperature: 37 ± 2%

Fig.2: in vitro testing showed lower arterial pressure with Prismaccess compared to other catheters.

Prismaccess

With Prismaccess

...we care for your catheter handling

- Coloured clamps for easy identification of access lumen and return lumen.
- Clear, kink-resistant extension lines.
- Luer-lock connectors for safe fitting to blood lines.
- Small suture ring to reduce skin irritation while allowing repositioning of catheter.
- Radiopaque catheter shaft for better control of catheter position using X-ray.

...we facilitate the catheter insertion

- Rigid and thermo sensitive polyurethane allows easy insertion combined with increased patient comfort.
- Inner dilator is provided for aiding insertion according to the Seldinger technique.
- Catheter kit offers more comfort for the patient at catheter insertion.

Prismaccess Double Lumen Catheter Kits

Product Description	Product Code	OD (F)	Length (mm)	Details	Units per Box
VWH1315	104219	13	150	Straight with stylette	5
VWH1317	104220	13	170	Straight with stylette	5
VWH1320	104221	13	200	Straight with stylette	5
VWH1325	106660	13	250	Straight with stylette	5
VVHC1315	109534	13	150	Curved with stylette	5
VVHC1320	109510	13	200	Curved with stylette	5
PriSMAccess Protect					
VWH1115	109714	11	150	Straight with stylette	5
VWH1120	109715	11	200	Straight with stylette	5
VWH1125	109716	11	250	Straight with stylette	5
VVHC1115	109882	11	150	Curved with stylette	5
VVHC1120	109881	11	200	Curved with stylette	5
MC-VWH1315	109970	13	150	Straight with stylette	5
MC-VWH1317	109969	13	170	Straight with stylette	5
MC-VWH1320	109968	13	200	Straight with stylette	5
MC-VWH1325	109967	13	250	Straight with stylette	5
MC-VWH1115	109717	11	150	Straight with stylette	5
MC-VWH115	109718	11	200	Straight with stylette	5
MC-VWH1125	109719	11	250	Straight with stylette	5

Catheters are delivered in a kit package including Introducer Needle (N 1707), Dilator, Guide wire, 2 Injection Caps and Wound Dressing.

These specifications are subject to change without notice.

For further information and operating instructions please refer to Operator's Manual.