

# Ordering Information

## Temporary Catheter

### GamCath® Single Lumen Catheter (10 units per box)

Product Description	Product Code	OD x length	Material	Details
GSC-815J	100873	8F x 150 mm	PUR	curved
GSC-815S	101804	8F x 150 mm	PUR	with stylette
GSC-820S	101170	8F x 200 mm	PUR	with stylette
GSC-825	101805	8F x 250 mm	PUR	

### GamCath® Single Lumen Catheter Kits (5 units per box)

Product Description	Product Code	OD x length	Material	Details
GSK-815S	101514	8F x 150 mm	PUR	with stylette
GSK-817,5S	101171	8F x 175 mm	PUR	with stylette
GSK-820S	101516	8F x 200 mm	PUR	with stylette
GSK-825	100825	8F x 250 mm	PUR	
GSK-812,5J	101110	8F x 125 mm	PUR	curved
GSK-815J	101806	8F x 150 mm	PUR	curved
GSK-815SY	101515	8F x 150 mm	PUR	stylette & "Y"-adapter
GSK-820SY	100554	8F x 200 mm	PUR	stylette & "Y"-adapter
GKH-1011*	100806	10F x 110 mm	PUR	hemofiltration kit

(with GPN-177, GGW-3870 J, GIC-100, Wound Dressing)

\* additional with 1 venous and 1 arterial marker clamp for hemofiltration kit

### GamCath® Double Lumen Catheter (5 units per box)

Product Description	Product Code	OD x length	Material	Details
GDC-1115	101797	11F x 150 mm	PUR	
GDC-1117,5	101242	11F x 175 mm	PUR	
GDC-1120	101799	11F x 200 mm	PUR	
GDC-1125	101800	11F x 250 mm	PUR	
GDC-1112,5J	101028	11F x 150 mm	PUR	curved
GDC-1115J	101798	11F x 175 mm	PUR	curved
GDC-1120J	101295	11F x 200 mm	PUR	curved

### GamCath® Double Lumen Catheter Kits (5 units per box)

Product Description	Product Code	OD x length	Material	Details
GDK-1115	101801	11F x 150 mm	PUR	
GDK-1117,5	103241	11F x 175 mm	PUR	
GDK-1120	101802	11F x 200 mm	PUR	
GDK-1125	101511	11F x 250 mm	PUR	
GDK-1112,5J	101169	11F x 125 mm	PUR	curved
GDK-1115J	101509	11F x 150 mm	PUR	curved
GDK-1117,5J	101379	11F x 175 mm	PUR	curved
GDK-1120J	101510	11F x 200 mm	PUR	curved
GDK-1215	100842	12F x 150 mm	PUR	with GVD-1215
GDK-1220	101803	12F x 200 mm	PUR	with GVD-1215

(with GPN-177, GGW-3870J, GVD-1115, 2x GIC-100, Wound Dressing)

### GamCath® Paediatric Catheter Kits (5 units per box)

Product Description	Product Code	OD x length	Material	Details
GSK-606P	110644	6F x 60 mm	PUR	paediatric
GDK-607,5P	101208	6F x 75 mm	PUR	paediatric
GDK-610P	100943	6F x 100 mm	PUR	paediatric
GDK-612,5P	100843	6F x 125 mm	PUR	paediatric
GDK-810P	101512	8F x 100 mm	PUR	paediatric
GDK-812,5P	101513	8F x 125 mm	PUR	paediatric
GDK-815P	100944	8F x 150 mm	PUR	paediatric

(with GPN-187, GGW-3250J for 6,5F / GGW-3570J for 8F, GVD-815, 2x GIC-100, Wound Dressing)

### GamCath® Double Lumen HighFlow Kits (5 units per box)

Product Description	Product Code	OD x length	Material	Details
GDHK-1315	103358	13F x 150 mm	PUR	HighFlow
GDHK-1317,5	103357	13F x 175 mm	PUR	HighFlow
GDHK-1320	103356	13F x 200 mm	PUR	HighFlow
GDHK-1325	106661	13F x 250 mm	PUR	HighFlow
GDHK-1315 J	109535	13F x 150 mm	PUR	HighFlow, curved
GDHK-1320 J	109511	13F x 200 mm	PUR	HighFlow, curved

(with GPN-177, GGW-3870 J, 2x GIC-100, Vessel Dilator, Wound Dressing)

### GamCath® Triple Lumen Catheter Kits (5 units per box)

Product Description	Product Code	OD x length	Material	Details
GTK-1215	101808	12F x 150 mm	PUR	
GTK-1217,5	103482	12F x 175 mm	PUR	
GTK-1220	101809	12F x 200 mm	PUR	
GTK-1215J	101384	12F x 150 mm	PUR	curved
GTK-1220J	101385	12F x 200 mm	PUR	curved

(with GPN-177, GGW-3870J, 3x GIC-100, Vessel Dilator, Wound Dressing)



### GamCath® Dolphin® Protect Double Lumen HighFlow Catheter Kits (5 units per box)

Product Description	Product Code	OD x length	Material	Details
MC-GDHK-1115	109708	11,5F x 150 mm	Dolphin® Protect™	with stylette
MC-GDHK-1120	109709	11,5F x 200 mm	Dolphin® Protect™	with stylette
MC-GDHK-1125	109710	11,5F x 250 mm	Dolphin® Protect™	with stylette
MC-GDHK-1115J	109683	11,5F x 150 mm	Dolphin® Protect™	curved, with stylette
MC-GDHK-1120J	109682	11,5F x 200 mm	Dolphin® Protect™	curved, with stylette
MC-GDHK-1315	109585	13F x 150 mm	Dolphin® Protect™	with stylette
MC-GDHK-1320	109584	13F x 200 mm	Dolphin® Protect™	with stylette
MC-GDHK-1325	109705	13F x 250 mm	Dolphin® Protect™	with stylette
MC-GDHK-1315J	109706	13F x 150 mm	Dolphin® Protect™	curved, with stylette
MC-GDHK-1320J	109707	13F x 200 mm	Dolphin® Protect™	curved, with stylette

(with GPN-177, GGW-3270 J for 11F, GGW-3870 J for 13 F, 2x GIC-100, Vessel Dilator, Wound Dressing)

\*\* PUR-PDMS-PCL/BI Copolymerfilm

## Long-term Catheter

### GamCath® EverFlow® Double Lumen Catheter Kits (5 units per box)

Product Description	Product Code	OD	Implant Length	Body Length	Material
GDSK 1517	109324	15F	170 mm	240 mm	Silicone
GDSK 1521	109323	15F	210 mm	280 mm	Silicone
GDSK 1525	109327	15F	250 mm	320 mm	Silicone
GDSK 1529	109326	15F	290 mm	360 mm	Silicone

(with 1 catheter, 1 suture ring, 1 introducer needle, 1 guidewire, 1 tunnelling trocar, 2 vessel dilators, 1 split sheath dilator system, 2 injection caps, 1 wound dressing)

### GamCath® EverFlow® Single Lumen Catheter Kits (5 units per box)

Product Description	Product Code	OD	Implant Length	Body Length	Material
GSSK-1417	109972	14F	170 mm	220 mm	Silicone
GSSK-1426	109971	14F	260 mm	300 mm	Silicone

Kit contents: 1 catheter, 1 suture ring, 1 introducer needle, 1 guidewire, 1 tunnelling trocar, 1 vessel dilator, 1 split sheath dilator system, 1 injection cap, 1 wound dressing, 1 volume calculator, 2 luer lock connectors

### Pourchez Long-term Catheter Kits (5 units per box)

Product Description	Product Code	Implant Length	Body Length	Details
RS19SH24	109735	190 mm	240 mm	RetrO®
RS23SH28	109744	230 mm	280 mm	RetrO®
RS27SH32	109743	270 mm	320 mm	RetrO®
RS31SH36	109742	310 mm	360 mm	RetrO®
RS35SH40	109741	350 mm	400 mm	RetrO®
XS19SH24	109740	190 mm	240 mm	XpressO®
XS23SH28	109739	230 mm	280 mm	XpressO®
XS27SH32	109738	270 mm	320 mm	XpressO®
XS31SH36	109737	310 mm	360 mm	XpressO®
XS35SH40	109736	350 mm	400 mm	XpressO®

(with 1 catheter, 1 introducer needle, 1 syringe, 2 guidewires, 3 dilators (12/14/16F), 1 sheath/dilator, 2 stylettes, 1 scalpel, 1 tunneler, suture wings, 4 gauze sponges, wound dressing, 2 injection caps, 2 extension adapters, 4 flat clamps, warning label)

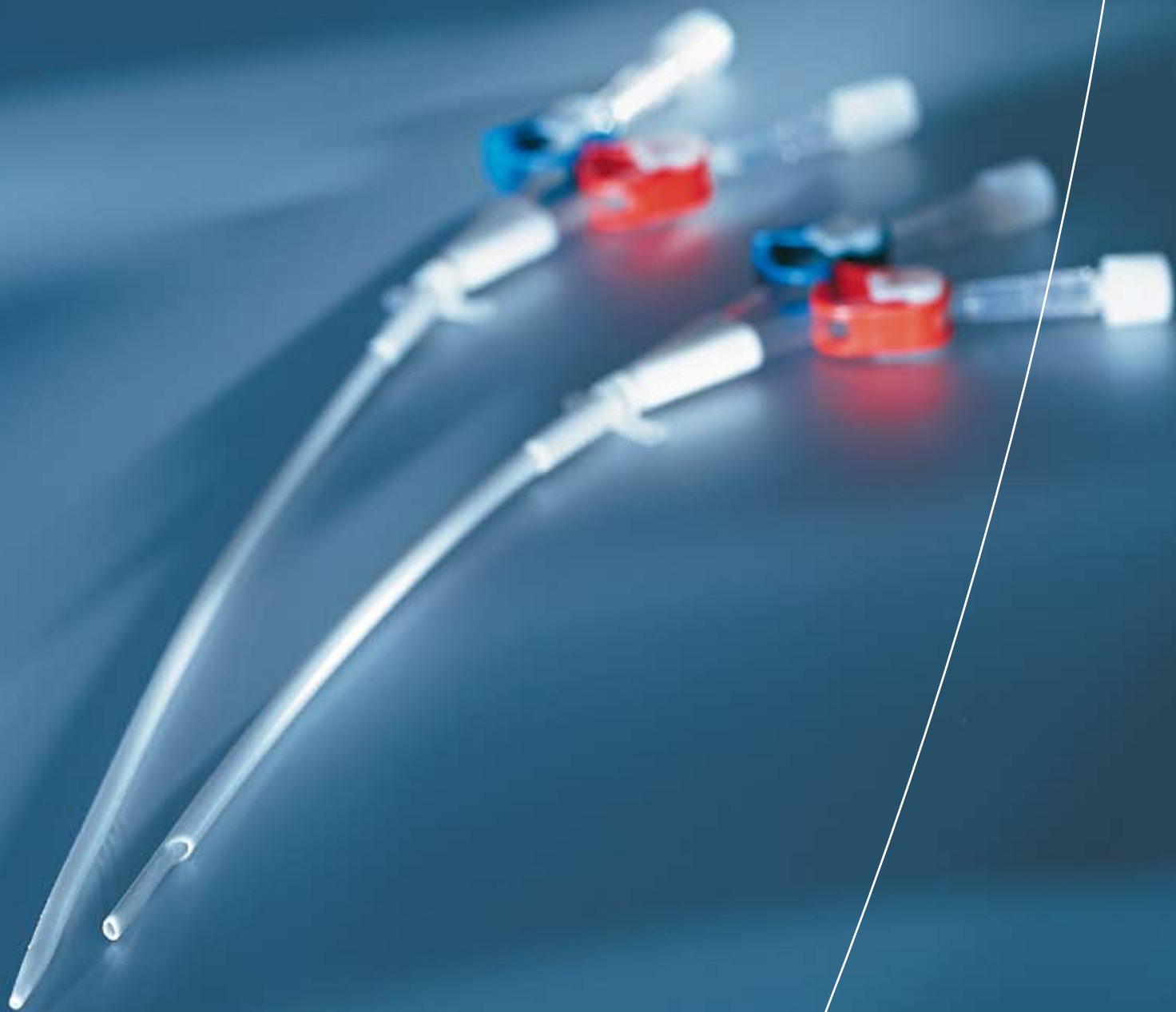
## Accessories

Product Description	Product Code	OD x length	Details	Units per Box
GGW-3250J	103488	0,81 mm x 500 mm	Guidewire J-Tip	15
GGW-3570J	102943	0,89 mm x 700 mm	Guidewire J-Tip	15
GGW-3870J	101795	0,97 mm x 700 mm	Guidewire J-Tip	15
GIC-100	101507		Injection Cap	100
E-10	106806		Protection Cap	100
GPN-177	101027	17 Gauge, 70 mm	Introducer Needle	50
GPN-187	100899	18 Gauge, 70 mm	Introducer Needle	50
GVD-815	101796	8F x 150 mm	Vessel Dilator	15
GVD-1015	101508	10F x 150 mm	Vessel Dilator	15
GVD-1115	100593	11F x 150 mm	Vessel Dilator	15
C-428	110628		Replacement Connector	15
S-660-C	101354		"Y"-Connector	50
Spire PXS05	107031	For Pourchez	Peel-Away Sheath/Dilator	5
Spire PRRK5	107038	For Pourchez	Repair Kit	15

Gambro Lundia AB  
 Box 10101  
 SE-220 10 Lund  
 Sweden  
 Tel. +46 46 16 90 00  
 www.gambro.com



# Where best Dialysis starts Gambro Access Care

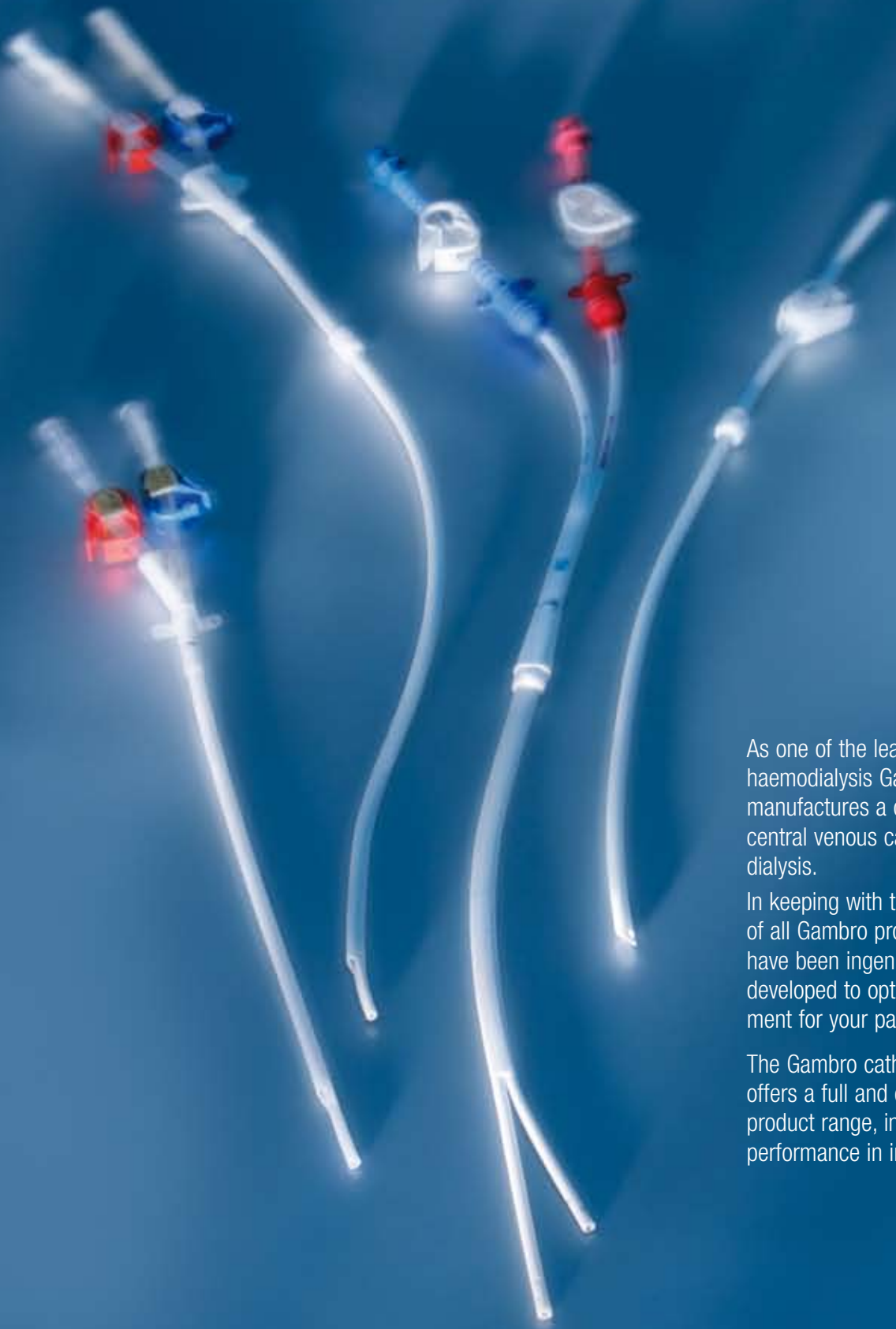


**GamCath® Catheter**

**A better way to better care**

 **GAMBRO®**

# GamCath® Catheter – Designed to achieve best quality in treatment



As one of the leading companies in haemodialysis Gambro develops and manufactures a complete range of central venous catheters for haemodialysis.

In keeping with the superior quality of all Gambro products, our catheters have been ingeniously designed and developed to optimise dialysis treatment for your patient.

The Gambro catheter programme offers a full and comprehensive product range, intended for best performance in individual treatments.

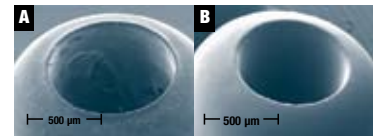
## Increased Dialysis Efficiency through improved Catheter Design

The optimised design of GamCath® HighFlow arterial and venous lumens reduces resistance of catheter and leads to improved blood flow conditions. Decreased arterial and venous pressure allows higher blood flow rates and therefore increases dialysis efficiency.



## Reduced Thrombogenicity and Optimised Blood Flow

The microdomain surface of the GamCath® Dolphin® Protect catheter reduces interaction between cells, plasma proteins and the surface of the catheter, thus significantly improving the catheter biocompatibility. The improved catheter biocompatibility leads to prevention of clotting and early access failure.

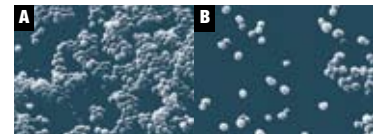


A: Catheter without Dolphin® Protect  
B: GamCath® Dolphin® Protect

## Antibacterial Protection to reduce Infection Risk

The new Dolphin® Protect technology integrates the antibacterial Bi additive into the catheter's surface coating which helps render the catheter's resistant to infection.

Dolphin® Protect is in fact the first antibacterial coating system on the market to work without the release of pharmaceuticals, i.e. antibiotics or other components like silver.



Incubation with *S. epidermidis* for 48-h at 37° C.  
A: Catheter without Dolphin® Protect  
B: GamCath® Dolphin® Protect

## Simplified Catheter Insertion for exact Catheter Placement

Rigid and thermosensitive polyurethane temporary catheters allow easy insertion combined with patient comfort.

Stainless steel tunnelling trocar for EverFlow® or SafeTrac® dual wire insertion technique for Pourchez RetrO® and XpressO® are provided for precised long-term catheter placement.

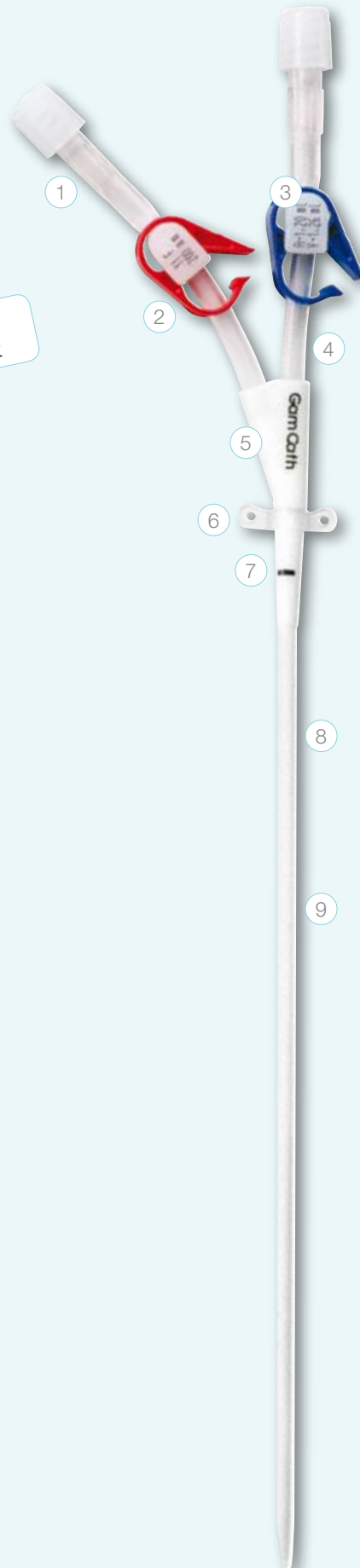
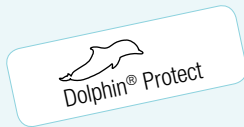
## Prolonged Catheter Survival

For increased reliability and reduced maintenance a solid construction as well as use of durable materials are important factors for our catheters. Moreover increased biocompatibility and innovative catheter lumen design of Gambro catheters decrease catheter complication rates and therefore prolonged duration of use.

## GamCath® Temporary Catheters

GamCath® temporary catheters are made of thermosensitive polyurethane for easy insertion and high patient comfort.

New generation of GamCath® Dolphin® Protect and GamCath® HighFlow catheters are designed to improve dialysis efficiency via catheter access by increased biocompatibility and improved catheter design.



- 1 **Strong luer lock connectors**  
(ISO 594 standard).
- 2 **Patented colour-coded safety-clamps**  
eliminate the risk of mis-clamping.
- 3 **Clear visible catheter dimensions and priming volume**  
for exact heparinization permanently imprinted on safty inserts of clamps.
- 4 **Straight or curved extension lines**  
for optimal patient comfort.
- 5 **Flat moulded bifurcation**  
with a straight configuration avoiding dead space and flow turbulences.
- 6 **Small rotatable suture ring**  
for less skin irritation.
- 7 **Guidemark on the catheter shaft**  
ensures correct insertion depth.
- 8 **Thermosensitive polyurethane shaft**  
which is stable during insertion, softens at body temperature for more patient comfort.
- 9 **Radiopaque catheter tubing**  
for easy location under X-ray.

## GamCath® Single Lumen Catheter

GamCath® Single Lumen Catheters are offered in different lengths. They can be inserted in the jugular, subclavian or femoral vein.

The removable stylette makes the catheter stiffer for easier insertion. GamCath® Single Lumen Catheters are available in kit packaging for easy insertion with Seldinger technique.



Single Lumen



## GamCath® Double Lumen Catheter

GamCath® Double Lumen Catheters can be inserted in the jugular, subclavian or femoral vein. To fulfil the different needs in patient treatment the Double Lumen Catheters are available in different lengths and diameters.

Double Lumen Catheters are available as HighFlow catheters with optimised design to improve blood flow conditions.

GamCath® Dolphin® Protect HighFlow catheters with antithrombogenic and anti-bacterial surface offer a perfect combination of increased biocompatibility and optimised blood flow conditions, which reduce the risk of catheter related complications.

## GamCath® Triple Lumen Catheter

GamCath® Triple Lumen Catheters are used for vascular access in haemodialysis. The third central lumen with 18G inner diameter provides additional access for supplementary functions like blood sampling or central venous pressure monitoring.

GamCath® Triple Lumen Catheters are offered in kit packaging, including accessories for catheter insertion with Seldinger technique.

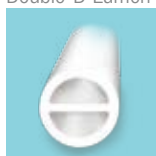
## GamCath® Paediatric Catheters

To perform haemodialysis in paediatric patients GamCath® is also available as paediatric catheter. These include single and double lumen catheters in different sizes and lengths.

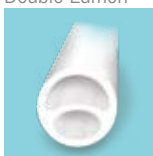
For comfortable and safe catheter insertion via Seldinger technique the paediatric double lumen catheters are delivered in kit packaging.



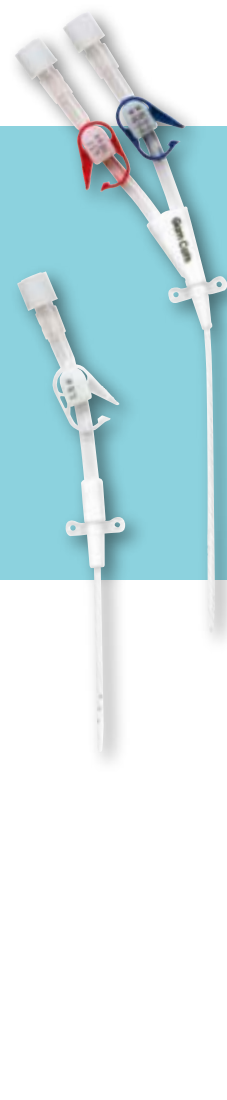
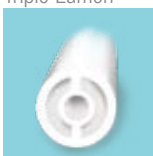
Double-D Lumen



HighFlow Design  
Double Lumen



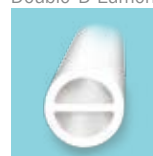
Triple Lumen



Single Lumen



Double-D Lumen



## GamCath® EverFlow® Long-term catheter

Our GamCath® EverFlow® silicone catheter creates improved conditions for long-term patient care. The smooth silicone material minimises vessel trauma and optimises the blood flow.

EverFlow® Double Lumen Catheter with its optimised lumen design for a better surface-volume ratio offers considerably improved blood flow conditions.

The EverFlow® Single Lumen long-term catheter provides increased flexibility for precise catheter placement and maximum flow rate.

- 1 **Robust Ultem® luer lock connectors**  
for durable usage without need for corrective interventions.
- 2 **Patented colour-coded safety clamps**  
eliminate the risk of mis-clamping.
- 3 **Clear visible catheter dimensions and priming volume**  
for exact heparinization permanently imprinted on safety inserts of clamps.
- 4 **Flat moulded bifurcation**  
with a straight configuration avoiding dead space and flow turbulences.
- 5 **Small removable suture ring**  
for less skin irritation.
- 6 **Implantable cuff**  
to anchor catheter and create infection barrier.
- 7 **Radiopaque catheter tubing**  
for easy location under X-ray.
- 8 **Soft silicone**  
for increased vessel conformance and decreased potential for vessel trauma.

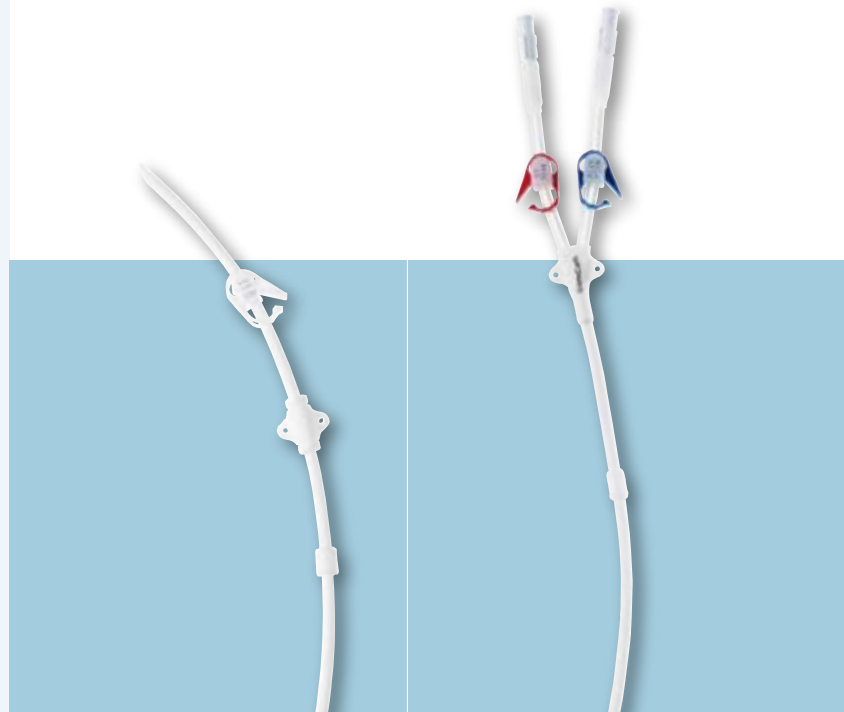


## GamCath® EverFlow® Single Lumen Catheter

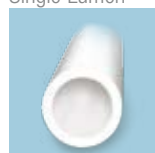
The smooth silicone material of EverFlow® Single Lumen long-term catheter minimises vessel trauma. The catheter connection side can be chosen just before implantation. The design allows individual fixation of the length before catheter insertion for exact catheter placement.

## GamCath® EverFlow® Double Lumen Catheter

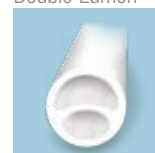
Specially engineered GamCath® EverFlow® kidney shaped design lowers arterial pressure and allows blood flow rates up to 430 ml/min. In addition the GamCath® EverFlow® catheter has no side holes – a significant advantage which helps to prevent clotting.



EverFlow®  
Single Lumen



EverFlow®  
Double Lumen



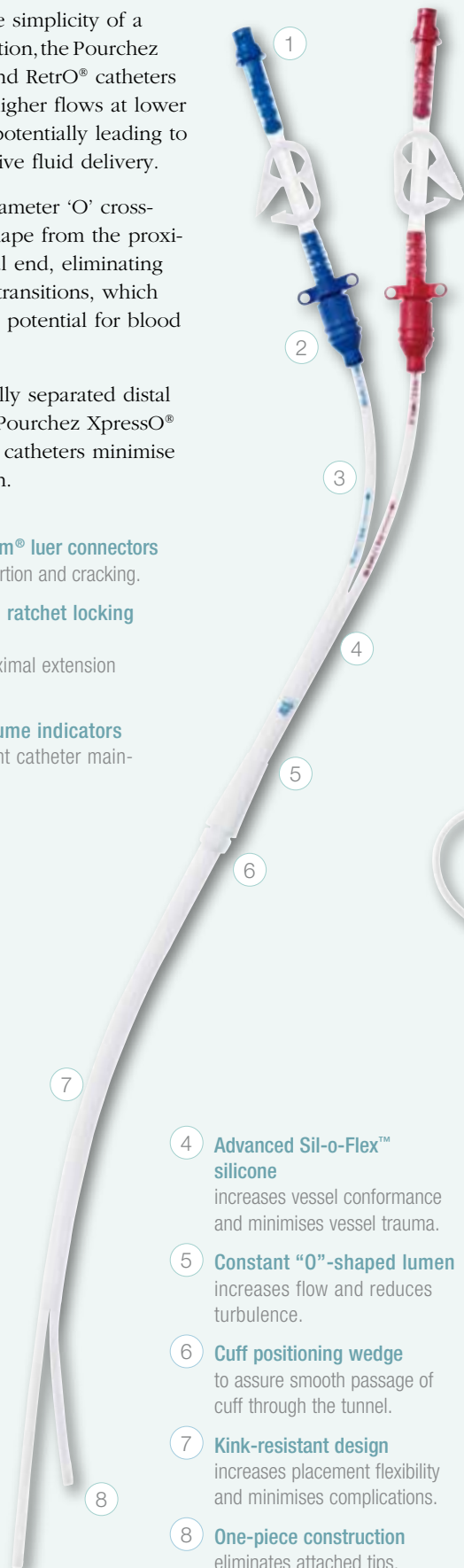
## Pourchez Long-term Catheter

Offering the simplicity of a single insertion, the Pourchez XpressO® and RetrO® catheters providing higher flows at lower pressures, potentially leading to more effective fluid delivery.

Constant diameter 'O' cross-sectional shape from the proximal to distal end, eliminating the abrupt transitions, which reduces the potential for blood turbulence.

The optimally separated distal tips of the Pourchez XpressO® and RetrO® catheters minimise recirculation.

- 1 **Durable Ultem® luer connectors** to resist distortion and cracking.
- 2 **Replaceable ratchet locking adapters** facilitate proximal extension attachment.
- 3 **Priming volume indicators** for convenient catheter maintenance.



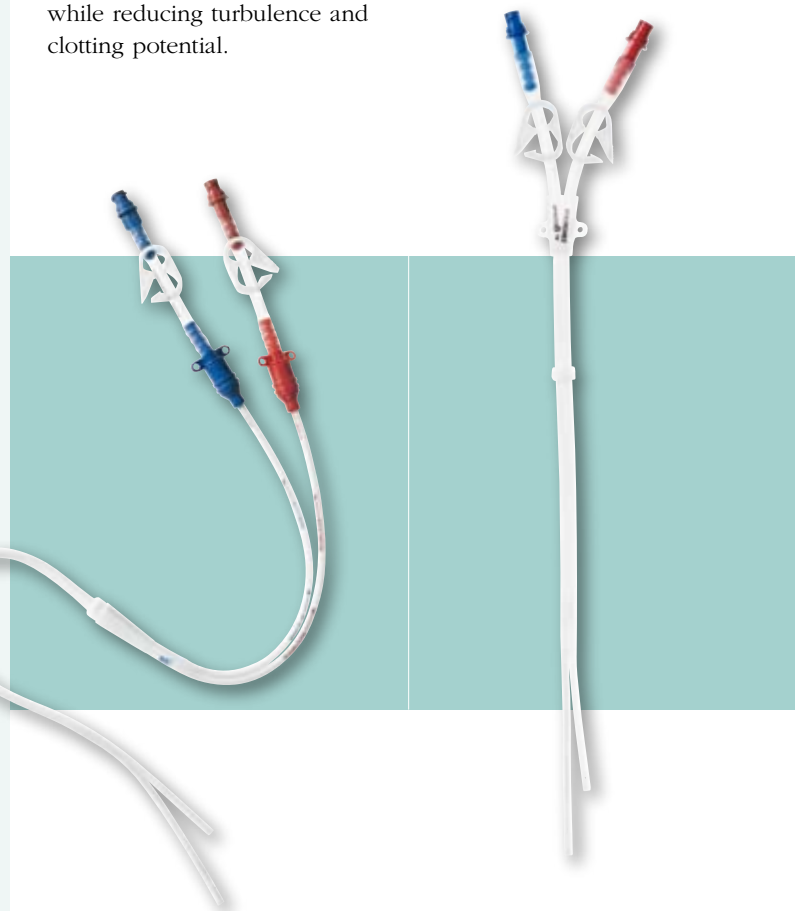
- 4 **Advanced Sil-o-Flex™ silicone** increases vessel conformance and minimises vessel trauma.
- 5 **Constant "O"-shaped lumen** increases flow and reduces turbulence.
- 6 **Cuff positioning wedge** to assure smooth passage of cuff through the tunnel.
- 7 **Kink-resistant design** increases placement flexibility and minimises complications.
- 8 **One-piece construction** eliminates attached tips.

## Pourchez RetrO® Double Lumen Catheter

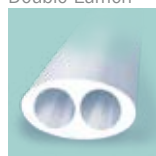
Using innovative retrograde tunneling to facilitate insertion, the Pourchez RetrO® catheter can be placed more precisely in the right atrium for maximum flow rate and minimum recirculation. The catheter's hubless design optimises the flow path along the entire length of the catheter, maximising flow while reducing turbulence and clotting potential.

## Pourchez XpressO® Double Lumen Catheter

The Pourchez XpressO® and also RetrO® have kink-resistant bodies, the result of a selected combination of design and materials. This increases catheter placement flexibility and minimises the need for subsequent intervention due to kinking.



Pourchez RetrO® and XpressO® Double Lumen



Manufactured by



Spire Biomedical, Inc.  
One Patriots Park  
Bedford, MA 01730-2396  
Tel: 781-275-6001  
Fax: 781-275-6010  
www.spirebiomedical.com

EU Rep  
QUALIMEDD LTD  
Long Lane, Hawthorn Hill,  
Maidenhead Berkshire,  
SL63TA England